

Temperature Sensor IC (Digital Output)

MM3285



Outline

This IC is an I2C BUS compatible digital temperature sensor IC incorporating a temperature sensor and sigma-delta AD converter. It provides low current consumption and I2C BUS compatible interface, which makes it ideal for a wide range of applications.

Applications

- Flat TVs System temperature monitoring
- Tablet PCs, PCs Office automation equipments
- PC servers / network servers

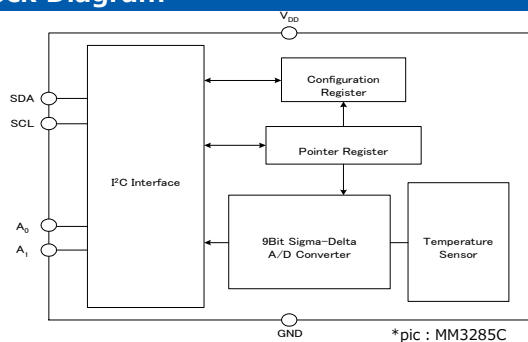
Features

- ① Low voltage operation: 3.0V to 5.5V
- ② Low current consumption: 75μA typ.
- ③ Fast update of time: 2ms typ.
- ④ Accuracy: ±2.0°C (25°C to +100°C)
- ⑤ Resolution: 9 bits (0.5°C)
- ⑥ Shutdown mode minimizing current consumption
- ⑦ I²C BUS compatible interface

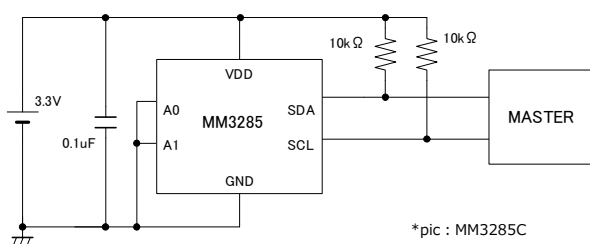
Specification

Item	Specification	Unit
Operation temperature	-40 ~ +125	°C
Operating voltage	3.0 ~ 5.5	V
Supply current	75 (typ.)	μA
Temperature accuracy	±2.0 (-25~+100°C)	°C
Resolution	9 (0.5°C)	bit
Data update time	2	ms
Start-up Reset Voltage	2.1	V

Block Diagram

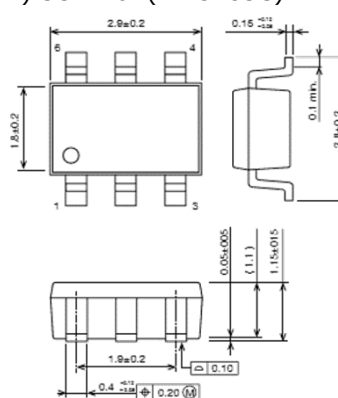


Application circuit



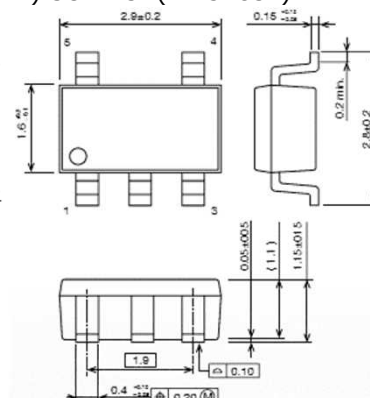
Package

1) SOT-26A(MM3285C)



PIN No.	PIN NAME
1	SCL
2	BND
3	A1
4	VDD
5	A0
6	SDA

2) SOT-25A(MM3285F)



PIN No.	PIN NAME
1	SCL
2	BND
3	A1
4	VDD
5	SDA